

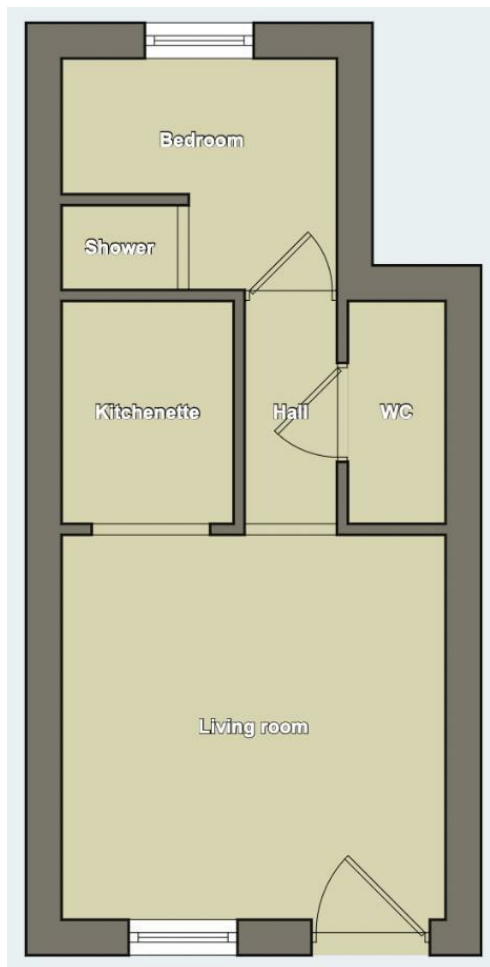
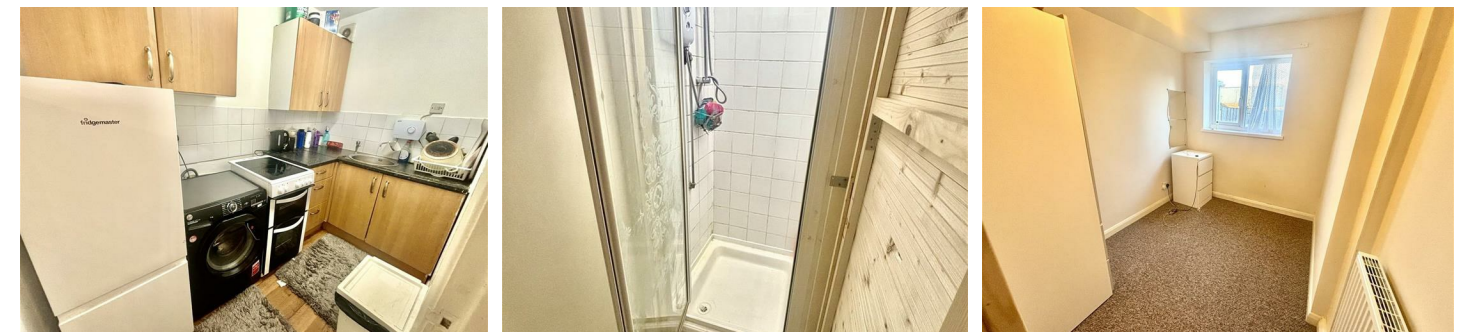
Viewings

Viewings by arrangement only.
 Call 0114 483 0038 to make an appointment.

Vendors Comments

Add text here

Energy Efficiency Rating		Current	Potential
Very energy efficient - lower running costs			
(92 plus) A			
(81-91) B			
(69-80) C			
(55-68) D			
(39-54) E		52	
(21-38) F			
(1-20) G			
Not energy efficient - higher running costs			
England & Wales		EU Directive 2002/91/EC	



285 Hatfield House Lane, Sheffield, S5 6HY

£600 Per month

- One bedroom apartment
- Ideal for a single occupant or couple
- Situated conveniently for The Northern General Hospital
- Viewing highly recommended
- Ground floor
- Close to an abundance of local amenities
- Highly popular location
- EPC Grade E

285 Hatfield House Lane, Sheffield S5 6HY

One bedroom GROUND FLOOR apartment, located in the highly popular location of SHIREGREEN, S5. Occupying an enviable position, close to an abundance of local amenities, public transport links and The Northern General Hospital.

Ideal for a single occupant or couple and a viewing is highly recommended.

In brief the accommodation comprises: living room, kitchenette, bedroom and shower / WC.

An early viewing is highly recommended to avoid disappointment!

EPC Grade E.



Council Tax Band: A

